

SPL180 TRIP AMPLIFIER MOTHERBOARD

INTRODUCTION

The Elcontrol SPL180 Motherboard assembly is a general purpose multi-channel trip amplifier, fitted in an IP65 rated enclosure for use in industrial environments. The amplifier is designed to be as versatile as possible, accepting a combination of up to four SPL180 series plug-in trip amplifier cards, in a variety of possible combinations (see below). Also, signal processing cards, providing functions such as signal strength outputs may be fitted.

FLAME AMPLIFIER OPTIONS

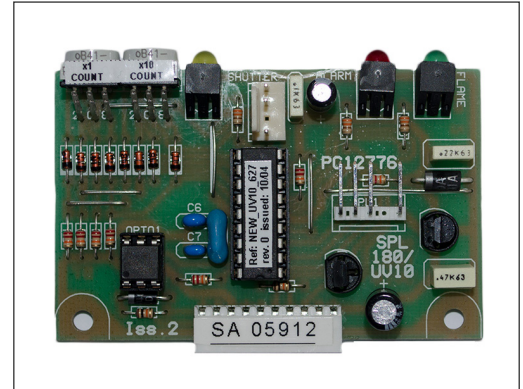
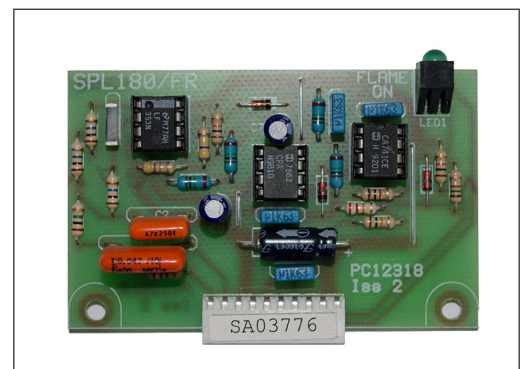
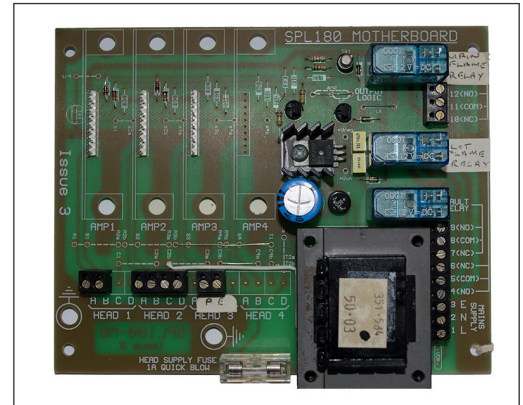
The standard SPL180 Motherboard will accept the following types of flame amplifiers in any combination: Self-Checking Ultra-Violet (SCUV), Digital SCUV, Simple UV (using mains powered viewing heads), and Infra-Red flicker. Other types (e.g. Flame Rectification) may be accommodated to special order (contact Elcontrol engineering for details).

OUTPUT SWITCHING OPTIONS

The SPL180 Motherboard is fitted with three single pole change-over relays. These may be configured in a number of different ways according to your application. Variations can include:

- One relay operates if ANY amplifier is detecting flame ('OR' mode). One relay operates if ALL amplifiers are detecting flame ('AND' mode). The third relay operates if any amplifier having an alarm facility (e.g.. SCUV amplifiers, which can detect a continuously firing UV cell) is showing an alarm output (this configuration applies when from two to four amplifier cards are fitted).
- Relays can be allocated on an individual basis to particular flame amplifiers (up to a maximum of three flame amplifier cards).
- With only two amplifier cards fitted, relays can be allocated on an individual basis, with the third relay being utilised as either an alarm relay, or an 'OR' mode relay (as described above).

Further combinations may be possible, contact Elcontrol engineering for details.



SPECIFICATIONS

Power Supply: 110 or 240V AC

(24V DC to special order)

Power Consumption: 10VA

Overall Dimensions:

150mm wide x 200mm long x 75mm high

Operating Temperature: -20°C to +65°C

Page 1 of 1 - Iss: July 2015



Elcontrol Limited
Unit 5, Regulus Works,
79 Lynch Lane,
Weymouth,
Dorset DT4 9DW

Tel: +44 (0)1305 773426
Fax: +44 (0)1305 760539
E-mail: sales@elcontrol.co.uk
WWW: <http://www.elcontrol.co.uk>